

# Cascadia High Speed Rail Corridor

Between Eugene, OR and Portland, OR



CHSR, Eugene to Portland,  
OR\_02

# Legend



CHSR Station in Tunnel





CHSR Station on Flyovers




CHSR Station on Ground


 On ground

 Cuts

 Fills

 Flyovers

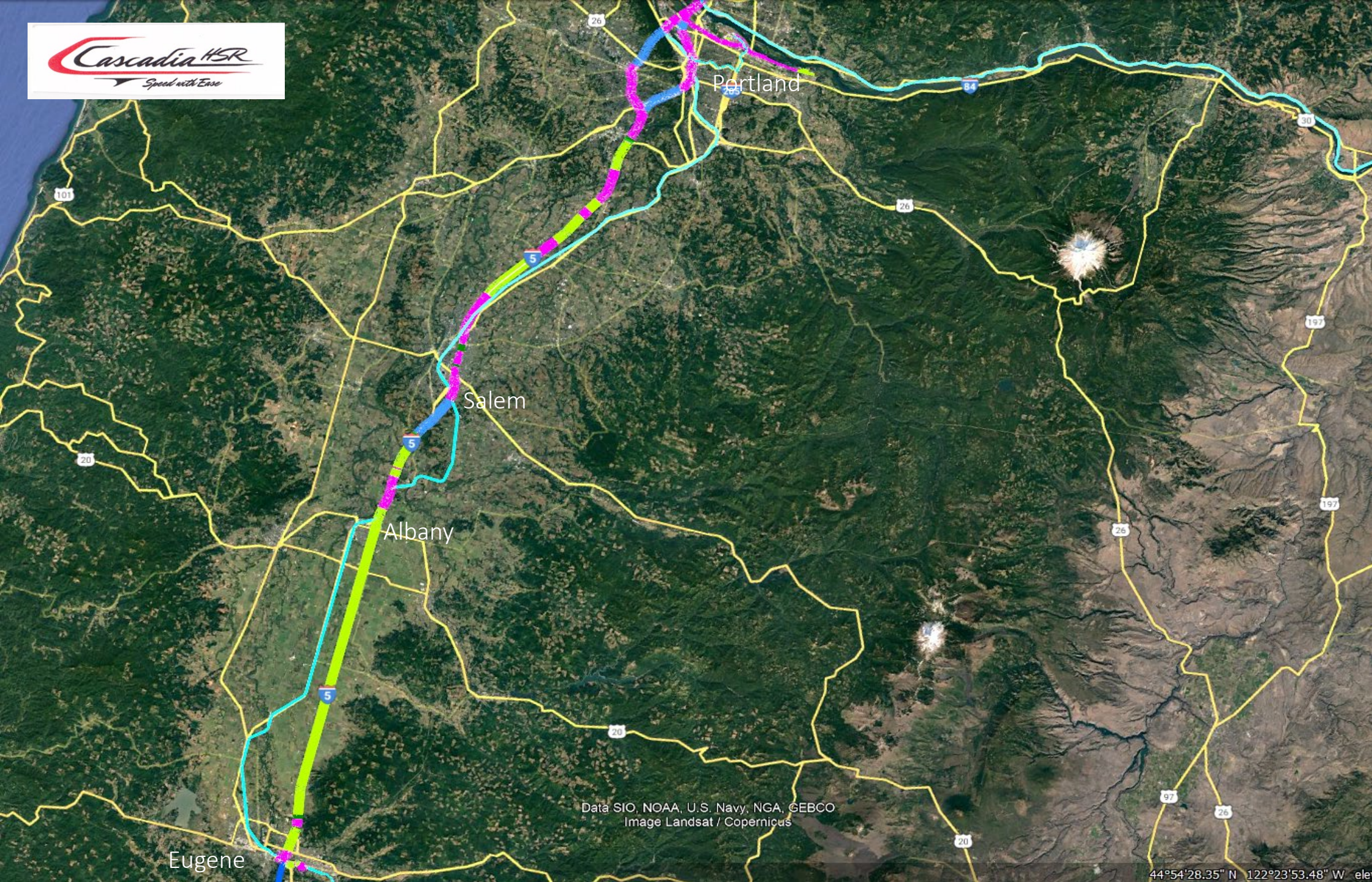
 Tunnels

 Existing Freight Railroads, other than BNSF and UP RR

 Existing Freight Railroads

C-ICE: Cascadia Inter-City Express

CCE: Cascadia Commuter Express



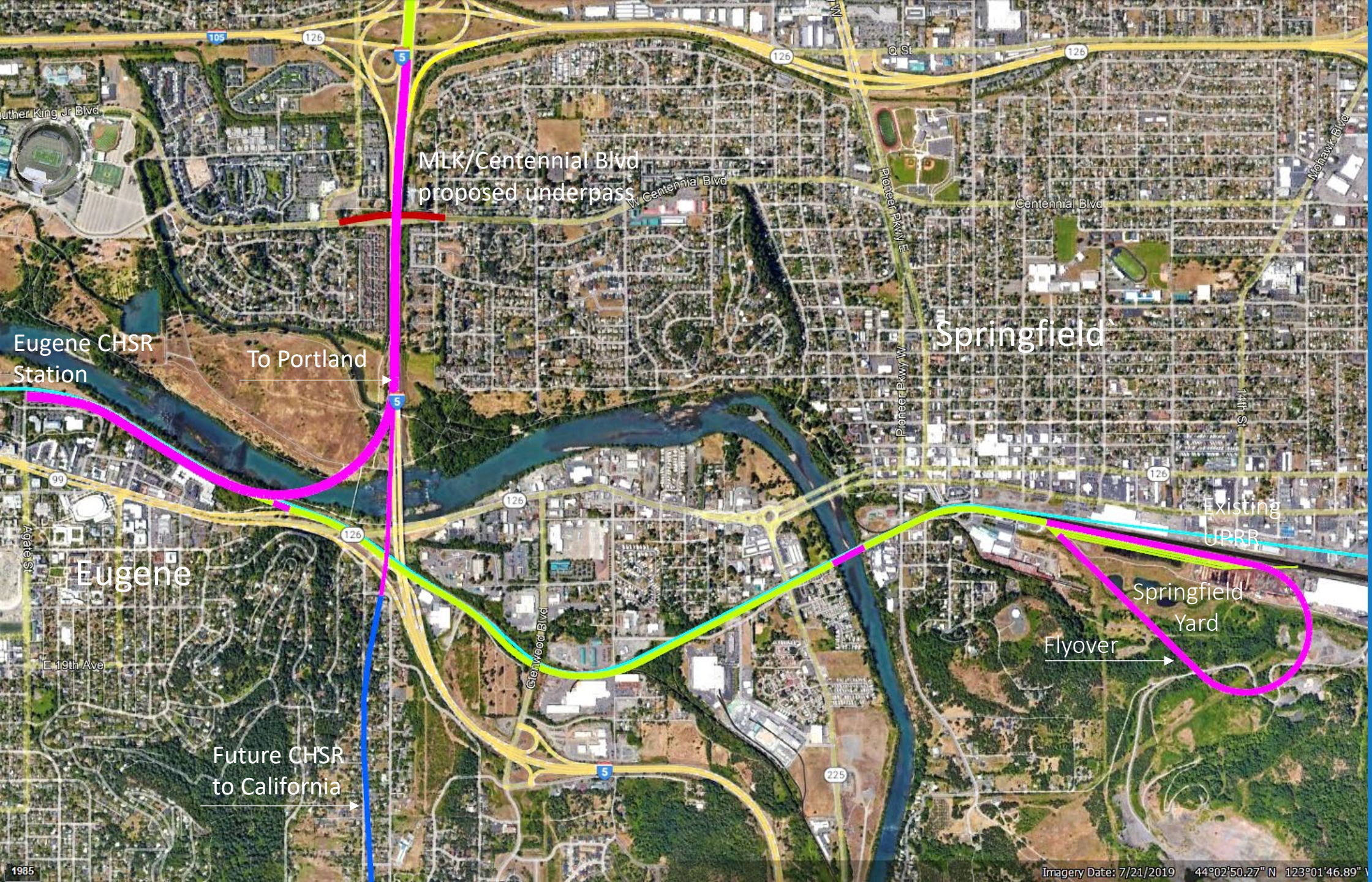
Data SIO, NOAA, U.S. Navy, NGA, GEBCO  
Image Landsat / Copernicus

44°54'28.35" N 122°23'53.48" W elev

Existing Union Pacific RR/Amtrak and Proposed CHSR Corridor

Amtrak uses UPRR freight tracks that are unsuitable for high speed rail. UPRR/Amtrak corridor is 123 miles; the CHSR is 13 miles shorter, which reduces CO2 emissions, energy use, and maintenance costs.

All CHSR corridors are double-tracked and electrified with the catenary above.



### CHSR in Eugene and Springfield

The proposed Springfield yard will service, clean and store trains.

The turn-around flyover is optional, it can be on the ground with some bridges, but the turn-around is needed.



Willamette River

UPRR and Amtrak

Millrace Parking Garage

Millrace Dr

Millrace Dr

Millrace Dr

Willamette River

Millrace Dr

Mill Race

Garden Ave

Franklin Blvd

Franklin Blvd

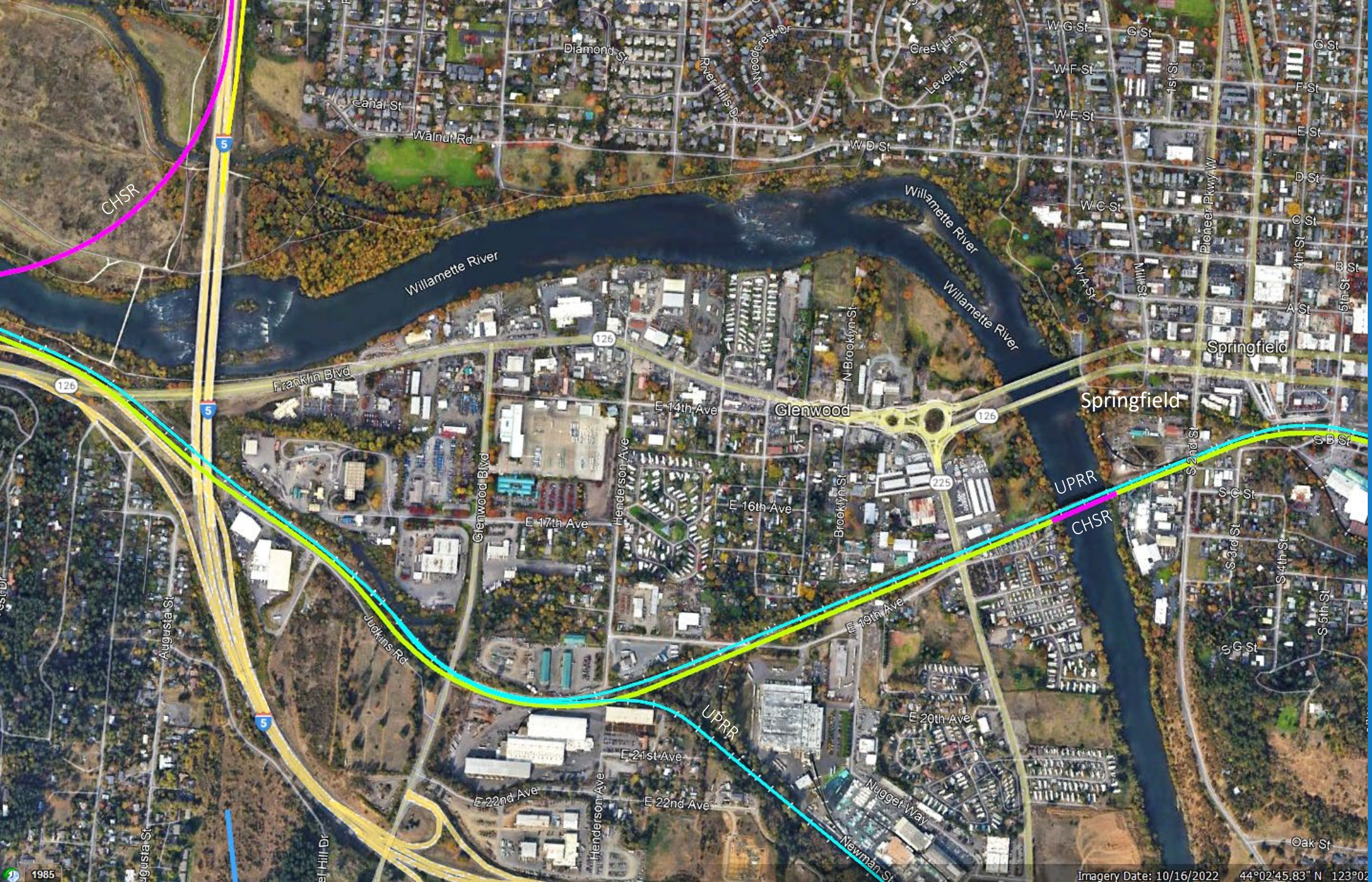
Moss St

Cascadia Inter-City Express (C-ICE) Station in Eugene

The three CHSR tracks are elevated above the existing parking lot.

The Eugene station will become the terminus for the Amtrak Starlight, serviced at the, Springfield Yard, then return to California on the same day.

The C-ICE station connects to Millrace Parking Garage ±35 ft above ground.



### CHSR in Springfield

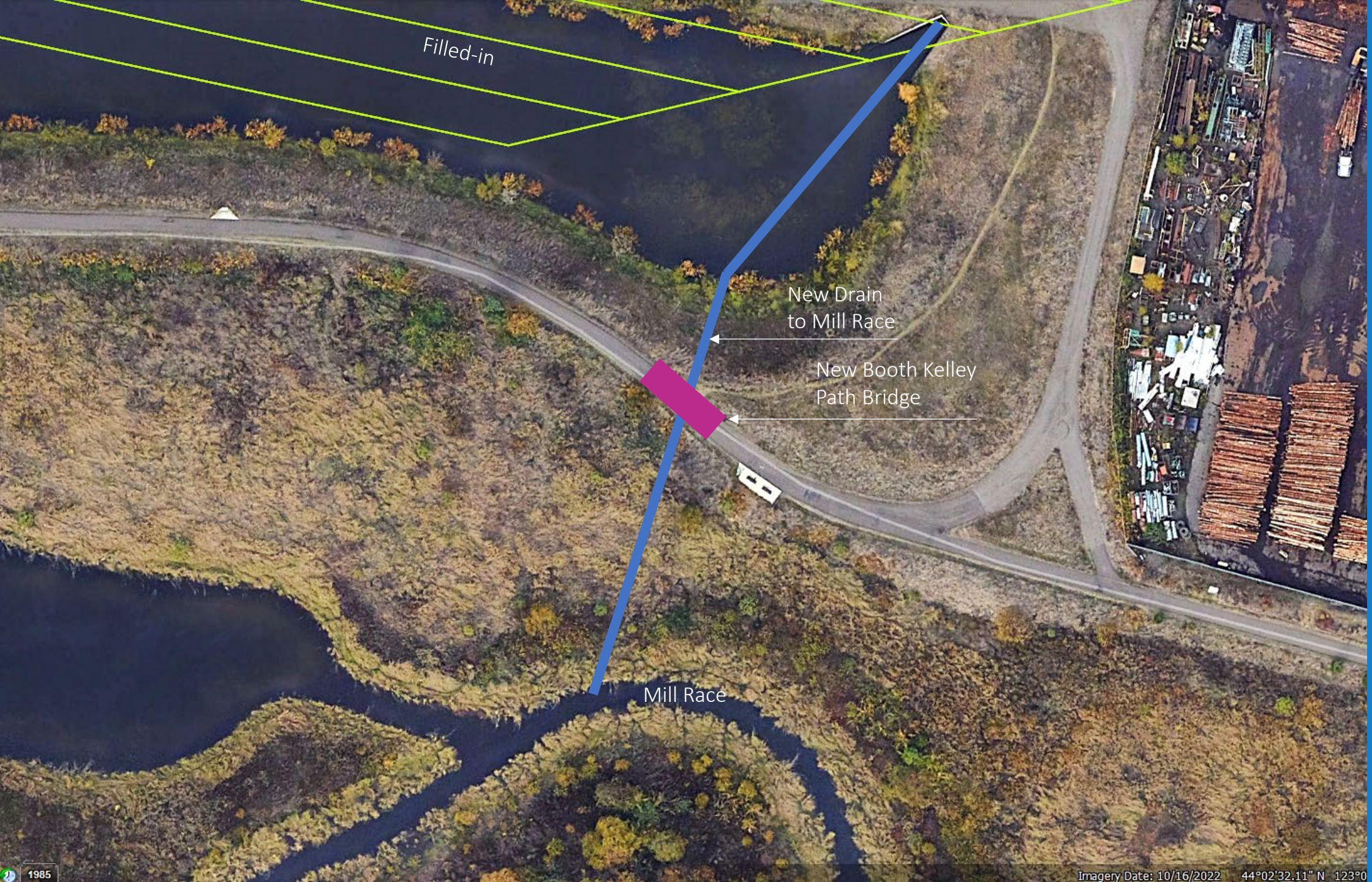
The proposed Springfield yard will service, clean, and store trains.

The turn-around flyover is optional; it can be on the ground with some bridges, but the turn-around is needed.



## CHSR Proposed Maintenance Yard in Springfield

The proposed CHSR maintenance yard is an entire service facility with train storage, car wash tracks, and machine shops performing all needed work. Computer and system-wide signaling maintenance will also take place here. The diesel switch engine will pull the CHSR trains through the car wash building.



Filled-in

New Drain  
to Mill Race

New Booth Kelley  
Path Bridge

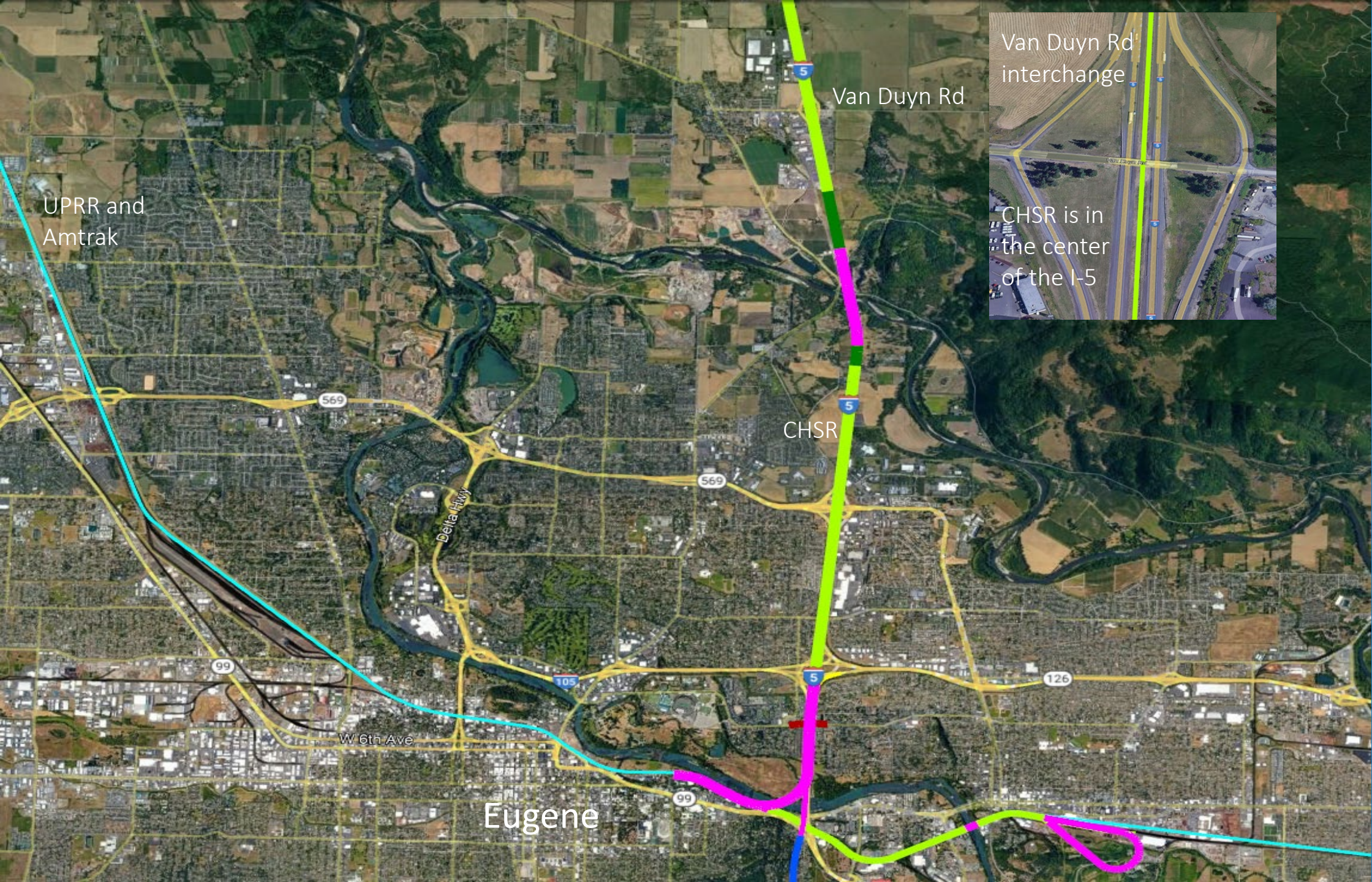
Mill Race

## CHSR in Eugene and Springfield

The enlarged area between the CHSR yard tracks and the Lumber Mill.

Provide a new drainage pipe to the Mill Race Water Way and fill-in the existing pond.





UPRR and Amtrak

Van Duyn Rd

Van Duyn Rd interchange

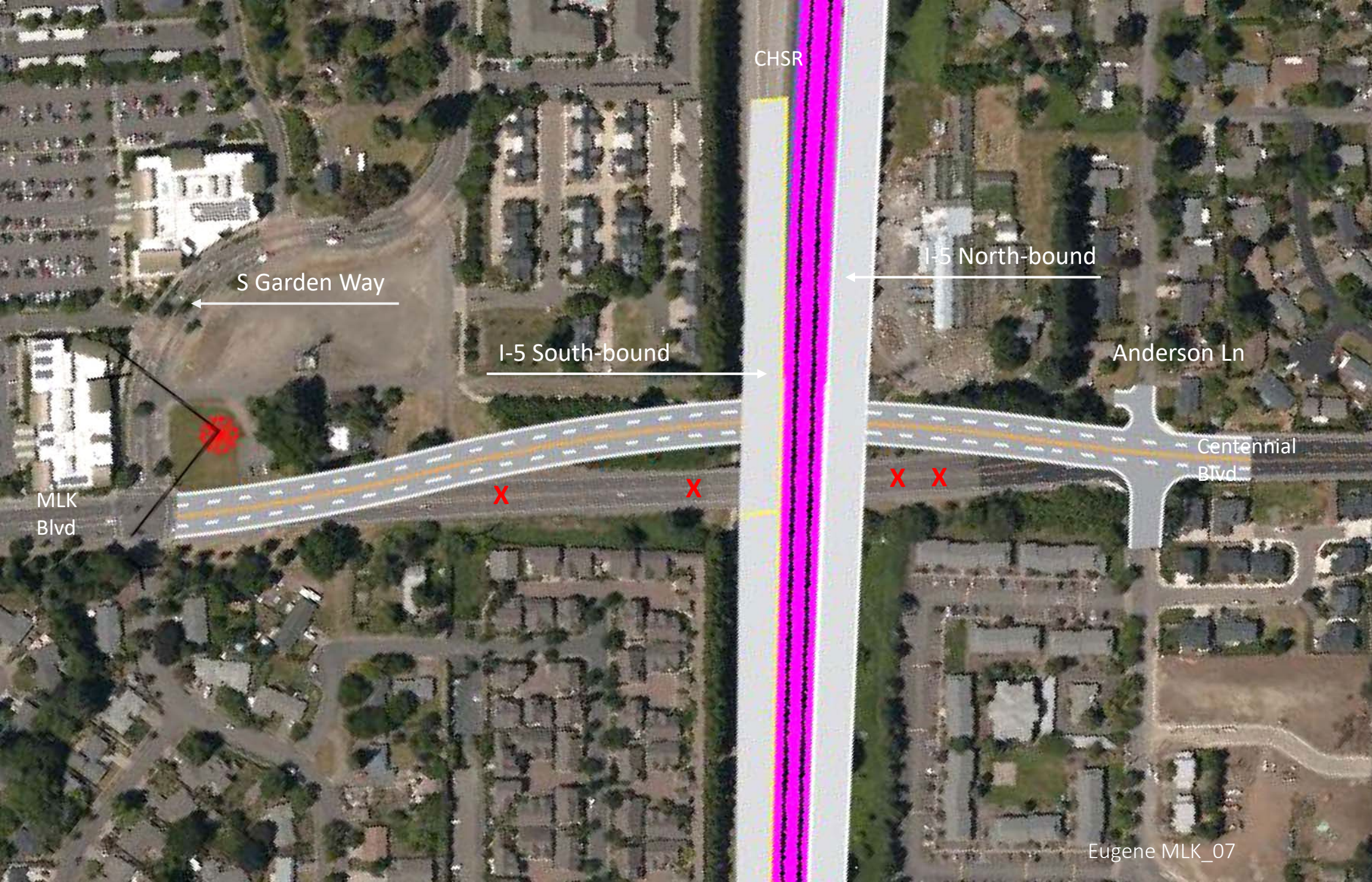
CHSR is in the center of the I-5

CHSR

Eugene

CHSR Corridor between Eugene and Van Duyn Rd

The CHSR is in the center of the I-5; see insert.



CHSR

S Garden Way

I-5 South-bound

I-5 North-bound

Anderson Ln

Centennial Blvd

MLK Blvd

X

X

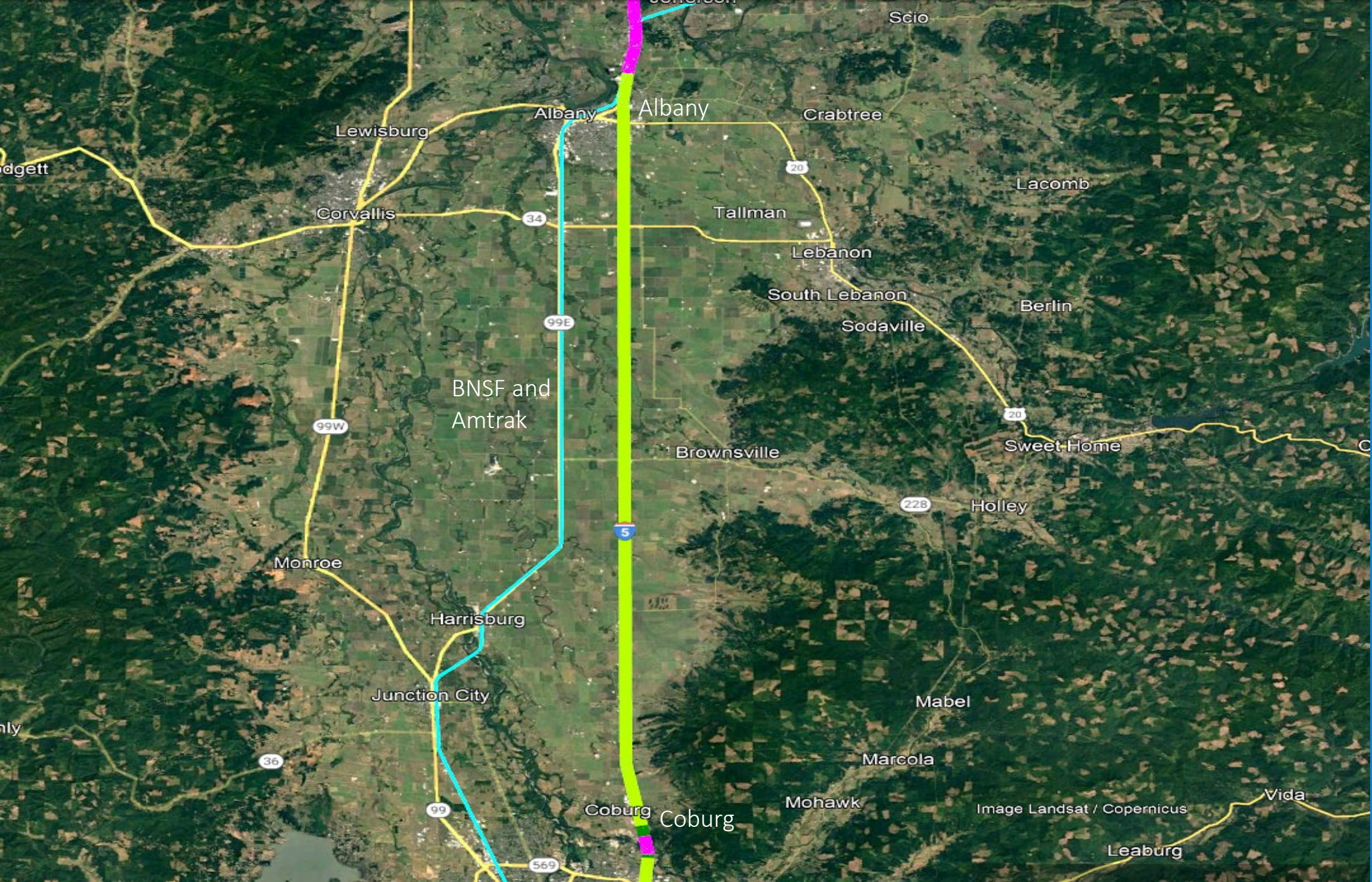
X

X

Eugene MLK\_07

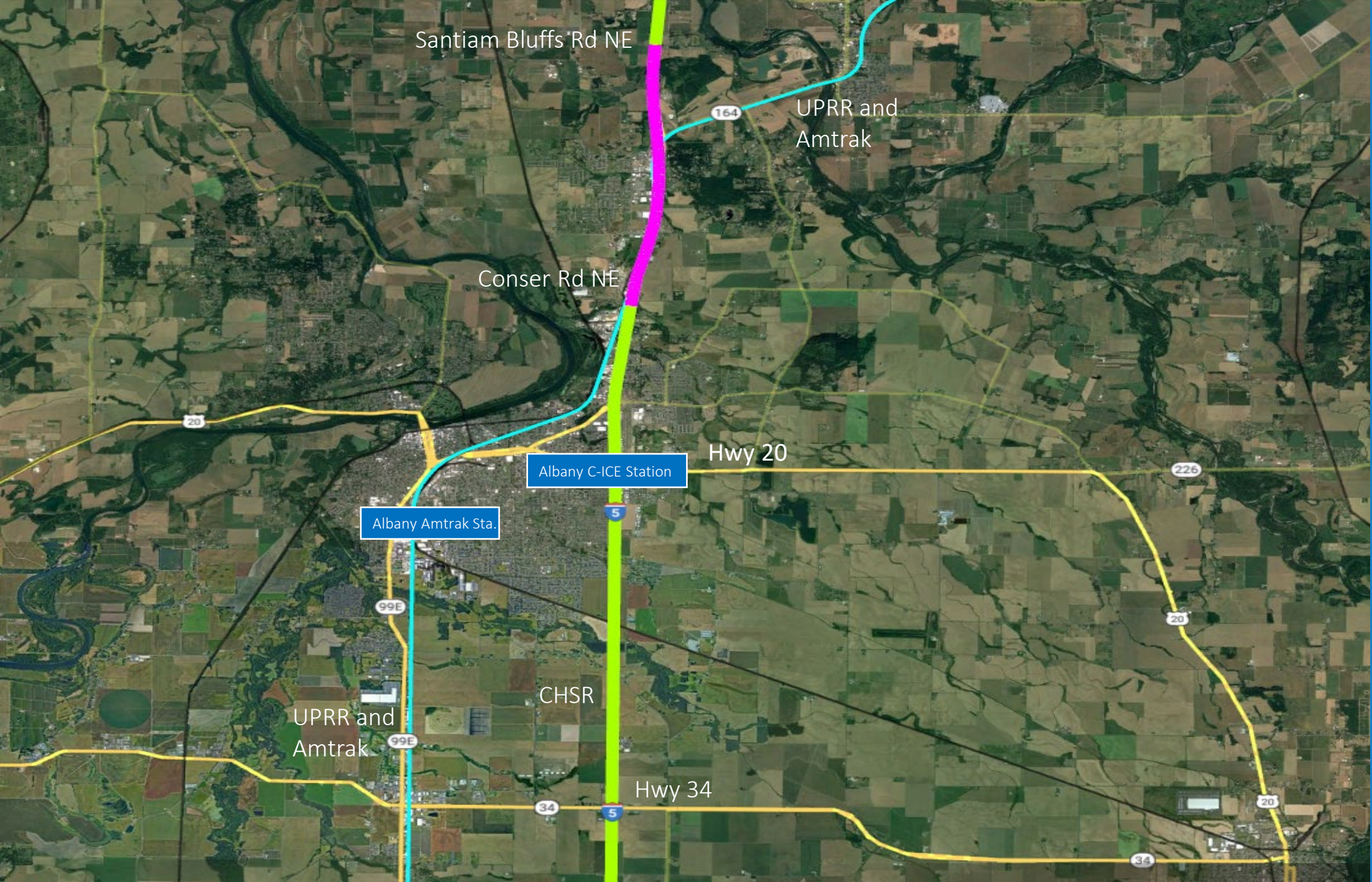
Eugene CHSR at I-5 and MLK/ Centennial Blvd

The existing Centennial Blvd overpass will be removed.



CHSR Corridor  
between  
Coburg and  
Albany

The CHSR is in  
the center of I-5



Santiam Bluffs Rd NE

164

UPRR and Amtrak

Conser Rd NE

Hwy 20

Albany C-ICE Station

Albany Amtrak Sta.

99E

CHSR

UPRR and Amtrak

99E

Hwy 34

34

5

226

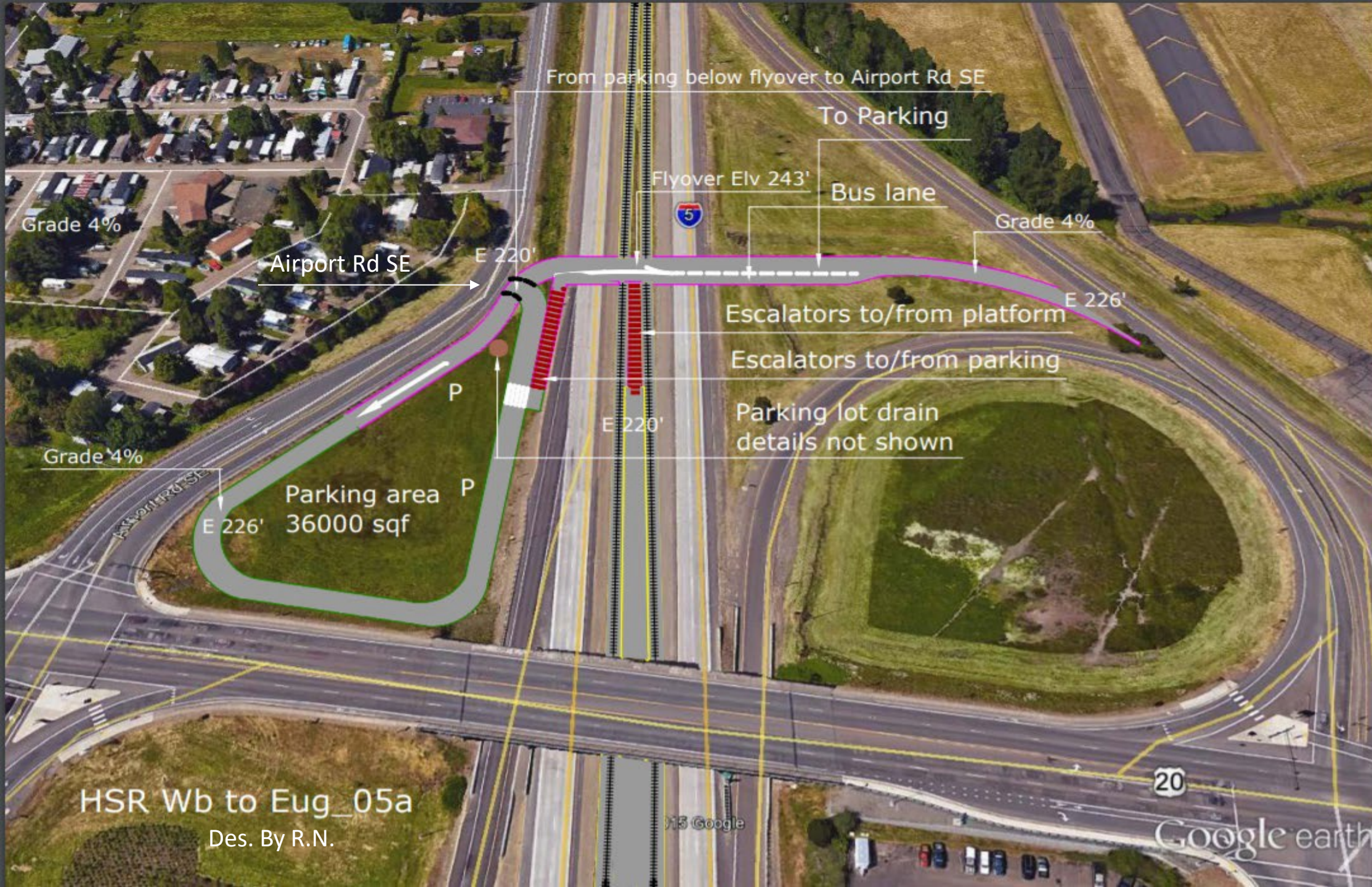
20

34

20

CHSR Corridor between Hwy 34 and Santiam Bluffs Rd NE

The CHSR will stay in the center of I-5 till Conser Rd NE, then swerve to the west to avoid tight I-5 curves. The CHSR will re-enter the I-5 median again at 0.4 miles south of Santiam Bluff Rd NE.



From parking below flyover to Airport Rd SE

To Parking

Flyover Elv 243'

Bus lane

Grade 4%

Grade 4%

Airport Rd SE

E 220'

E 226'

Escalators to/from platform

Escalators to/from parking

Parking lot drain details not shown

Grade 4%

Parking area P  
36000 sqf

E 226'

HSR Wb to Eug\_05a

Des. By R.N.

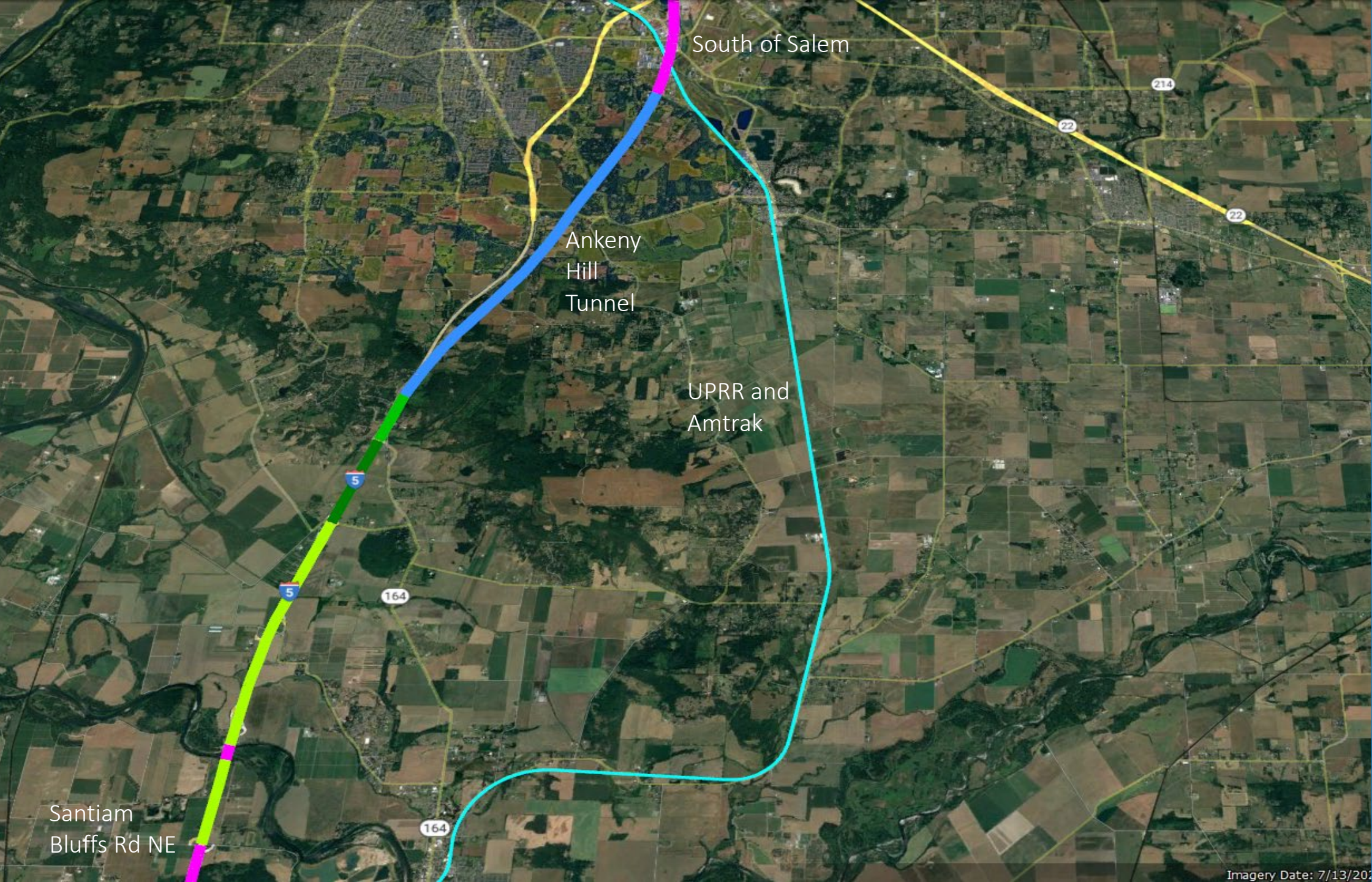
© 2015 Google

20

Google earth

CHSR Corridor  
and Albany  
C-ICE Station

This station will  
have express bus  
service to  
Newport and  
Bend.



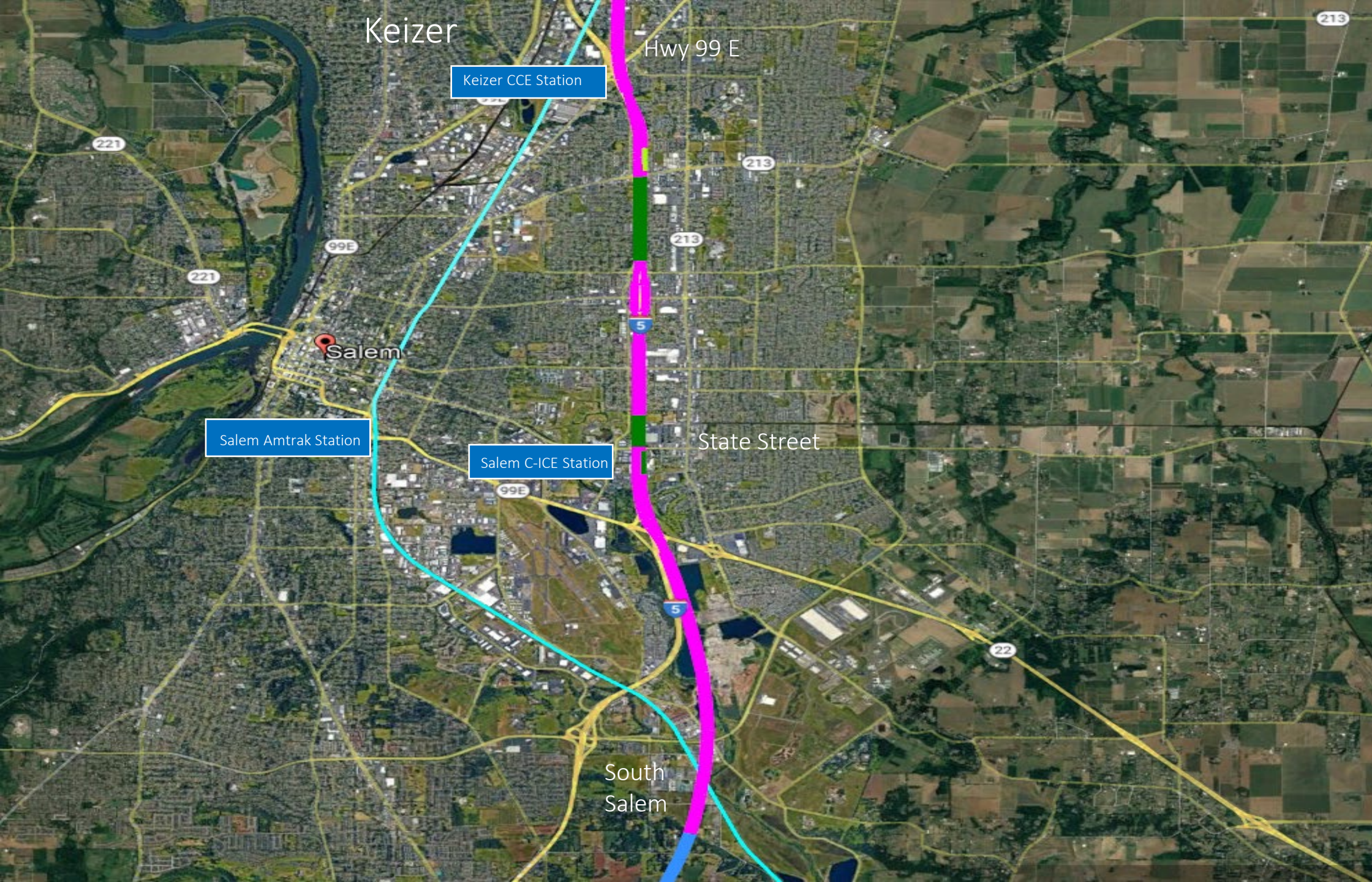
South of Salem

Ankeny Hill Tunnel

UPRR and Amtrak

Santiam Bluffs Rd NE

CHSR Corridor between Santiam Bluff Rd NE and South Salem



Keizer

Hwy 99 E

Keizer CCE Station

Salem

Salem Amtrak Station

Salem C-ICE Station

State Street

South Salem

CHSR Corridor between South Salem and Keizer

The CHSR will have a station at State Street and Keizer at Hwy 99 East.

Hawthorn Ave NE

There is a secure underpass, stairs, escalators, and elevators to access the Salem C-ICE platforms

Park and Ride

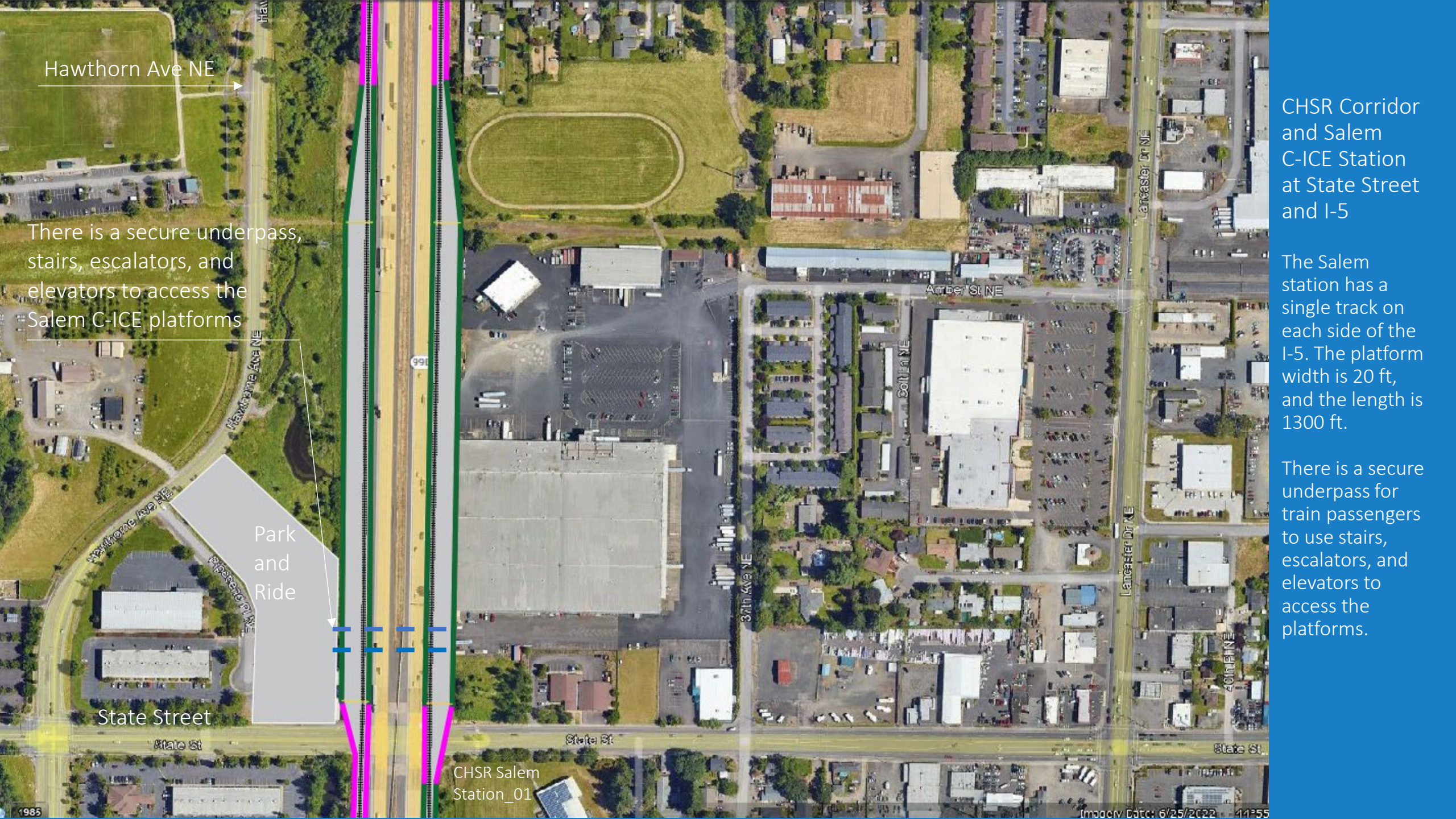
State Street

CHSR Salem Station\_01

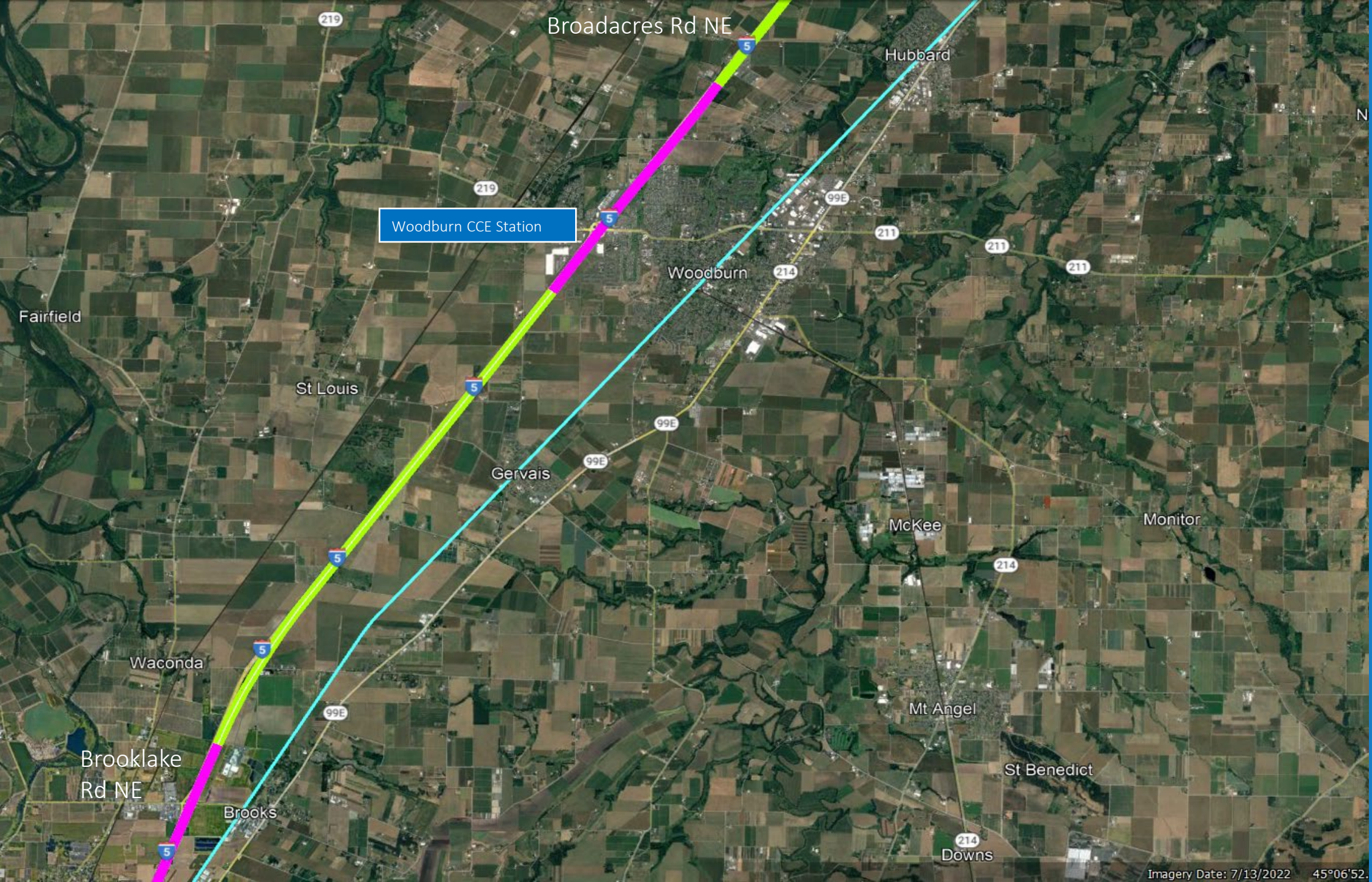
CHSR Corridor and Salem C-ICE Station at State Street and I-5

The Salem station has a single track on each side of the I-5. The platform width is 20 ft, and the length is 1300 ft.

There is a secure underpass for train passengers to use stairs, escalators, and elevators to access the platforms.







CHSR Corridor  
between  
Brooklake  
Rd NE and  
Broadacres  
Rd NE

The Woodburn  
CCE Station is at  
I-5 and Hwy 214.



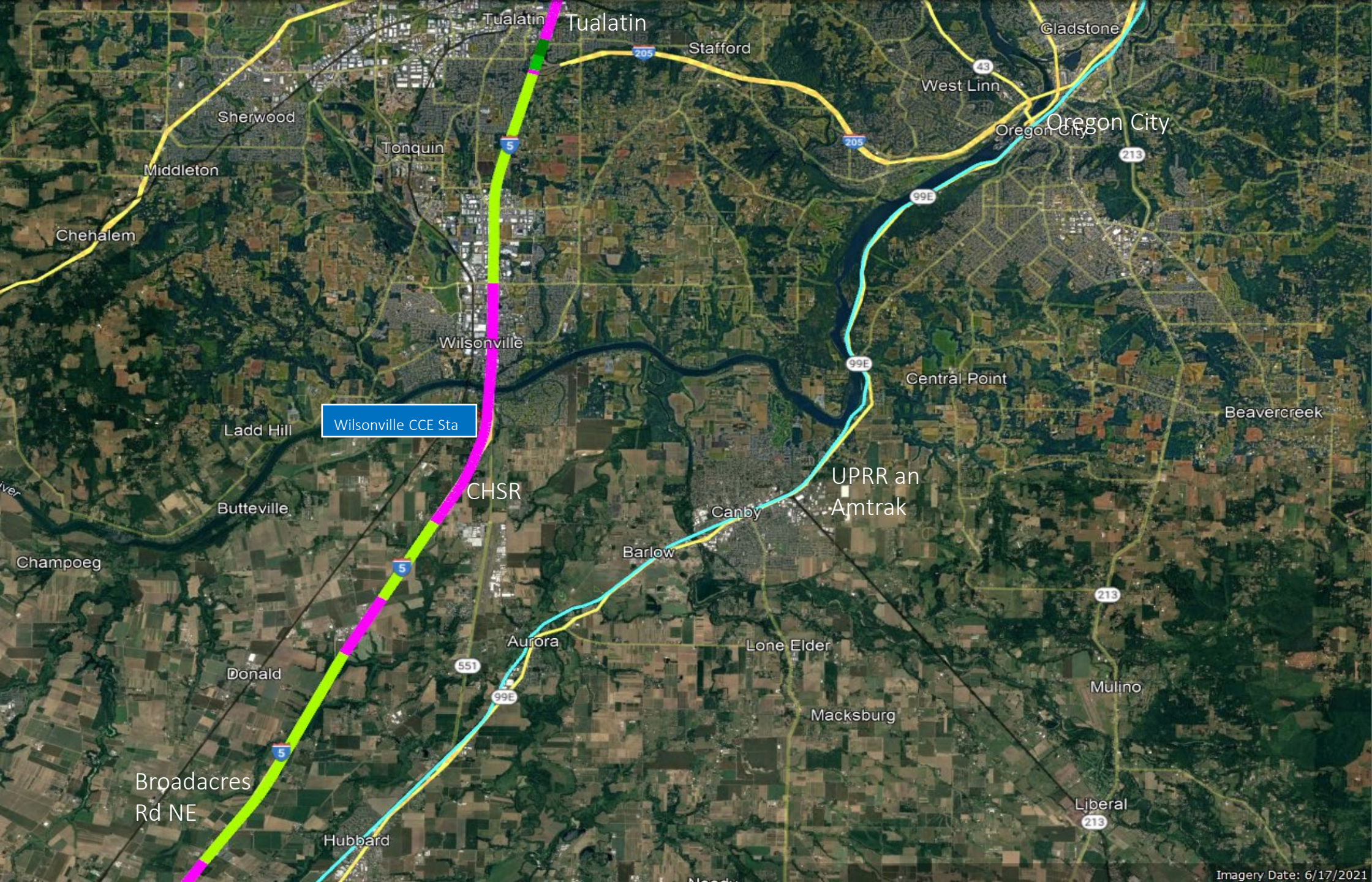
Woodburn  
Outlet  
Stores

Parking  
2 acres

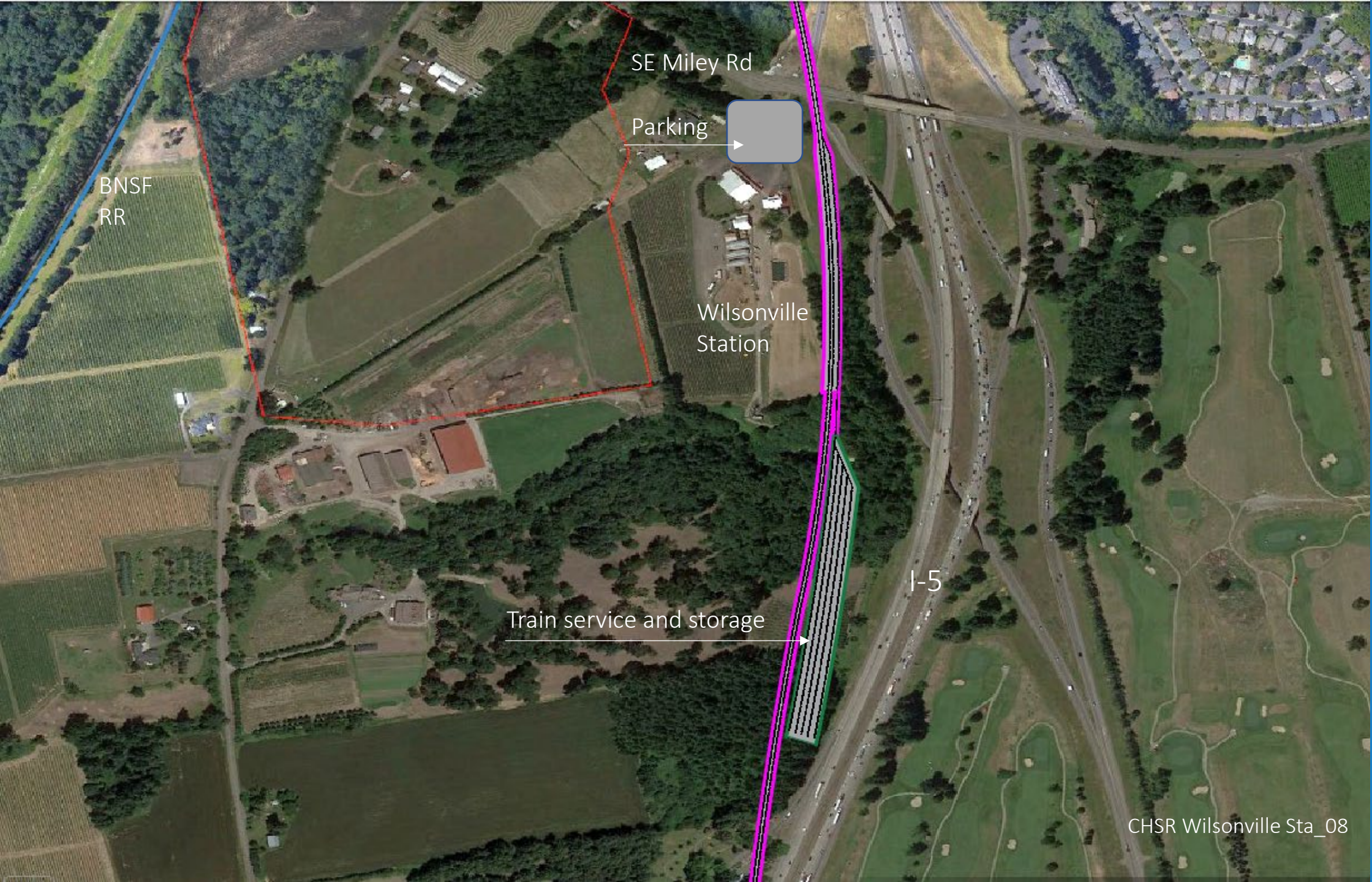
Hillsboro and Silverton Hwy NE

## Woodburn CCE Station

The CHSR has  
four tracks to  
bypass the CCE  
trains.



CHSR Corridor  
between  
Broadacres Rd  
NE and I-205

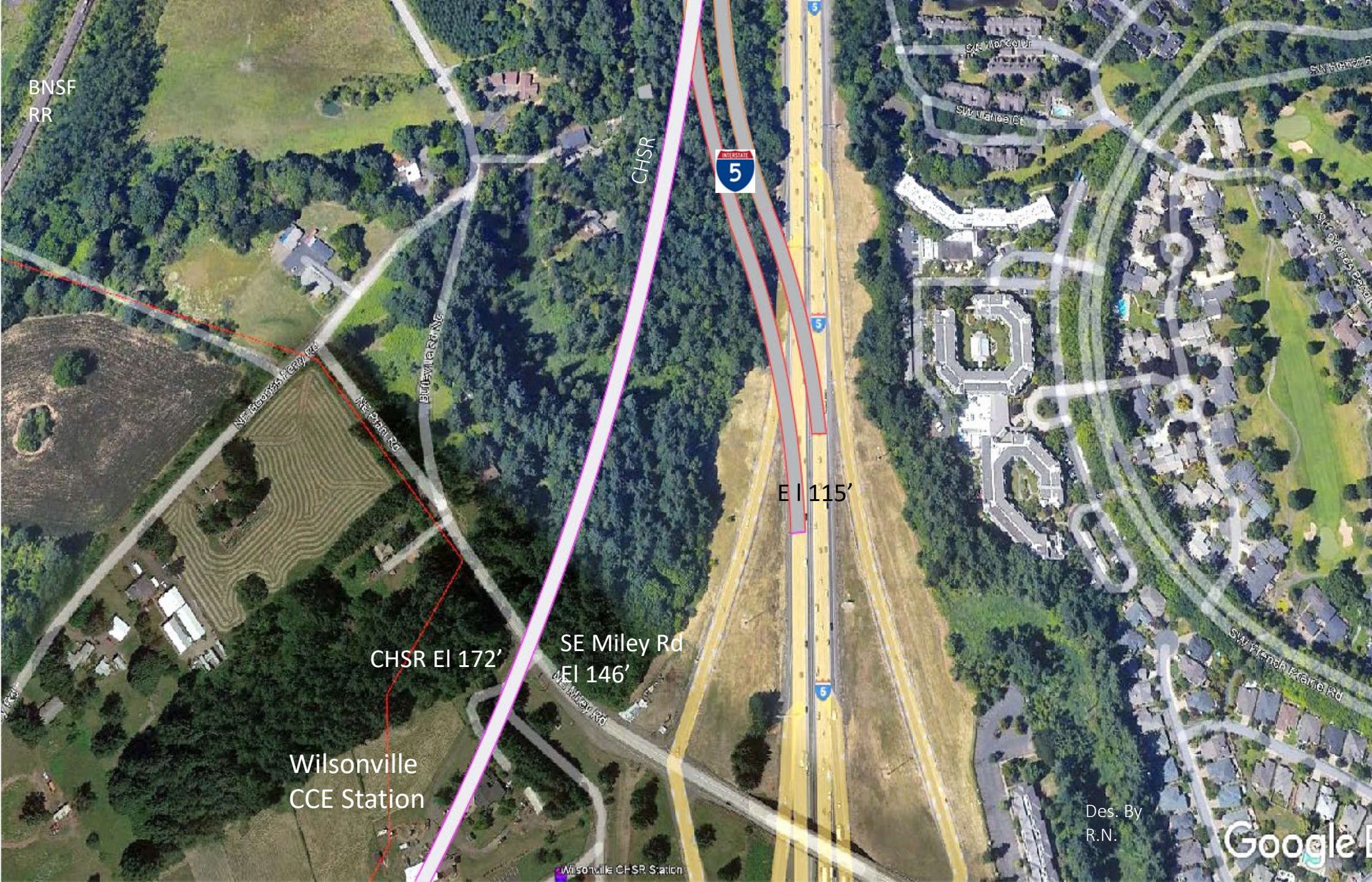


### CHSR Corridor at the Proposed Wilsonville CCE Station

This station has three tracks, two for through trains and one for commuters.

There is also a train service and storage yard.

The station length is 1300 ft long. The service and storage yard tracks are 1300 feet long and can accommodate five double train sets.



BNSF  
RR



CHSR

I-5

E I 115'

CHSR EI 172'

SE Miley Rd  
EI 146'

Wilsonville  
CCE Station

Wilsonville CHSR Station

Des. By  
R.N.



CHSR, CCE  
between SE  
Miley Rd and  
Southbank of  
Willamette  
River

The new I-5 is  
below the CHSR  
corridor.

Insert

E 115 ft

BNSF  
Bridge

I-5 EI ± 135'

CHSR EI ± 185'

Willamette River

Insert

Wilsonville  
CCE Station

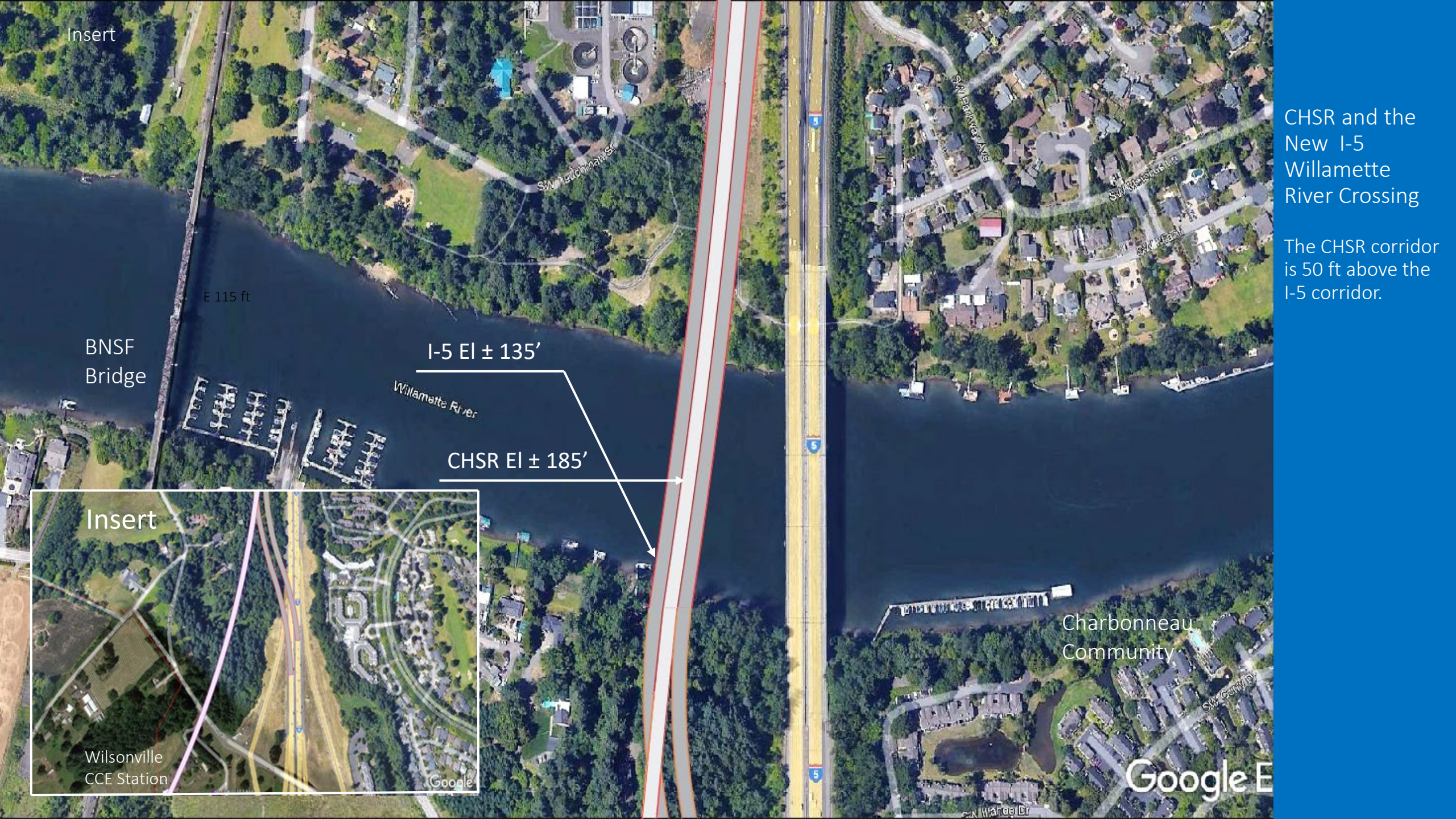
Google

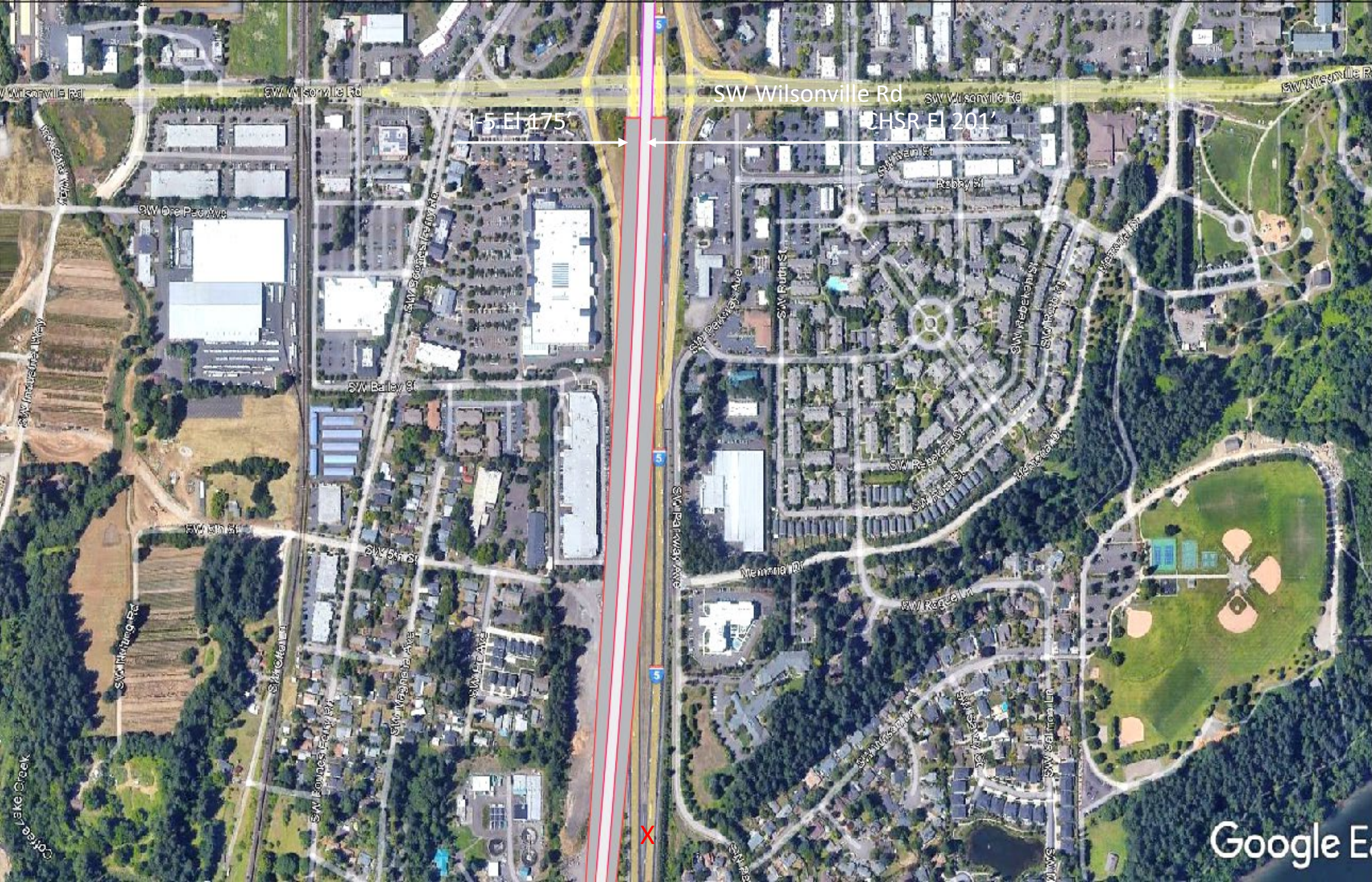
Charbonneau  
Community

Google E

CHSR and the  
New I-5  
Willamette  
River Crossing

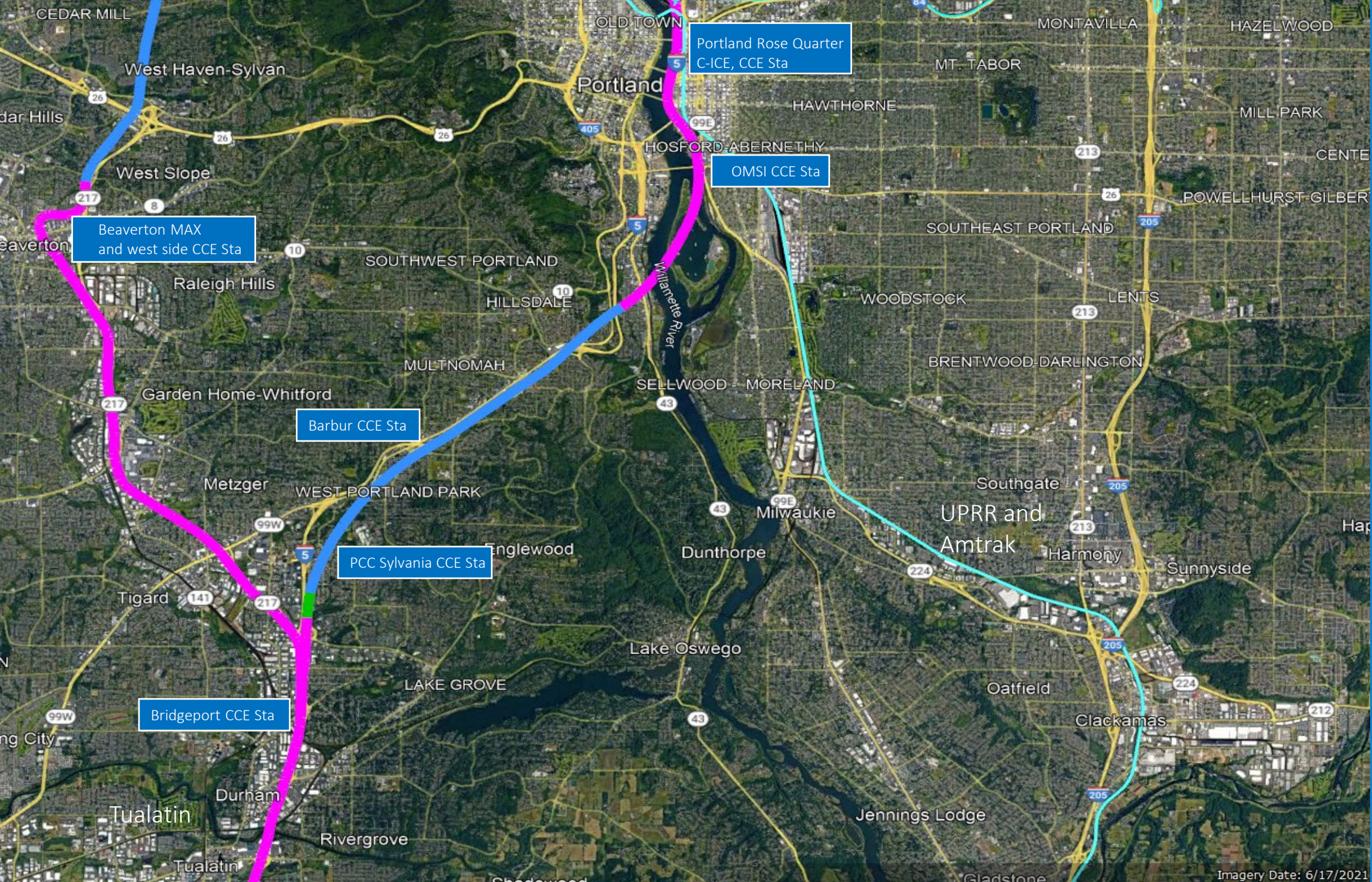
The CHSR corridor  
is 50 ft above the  
I-5 corridor.





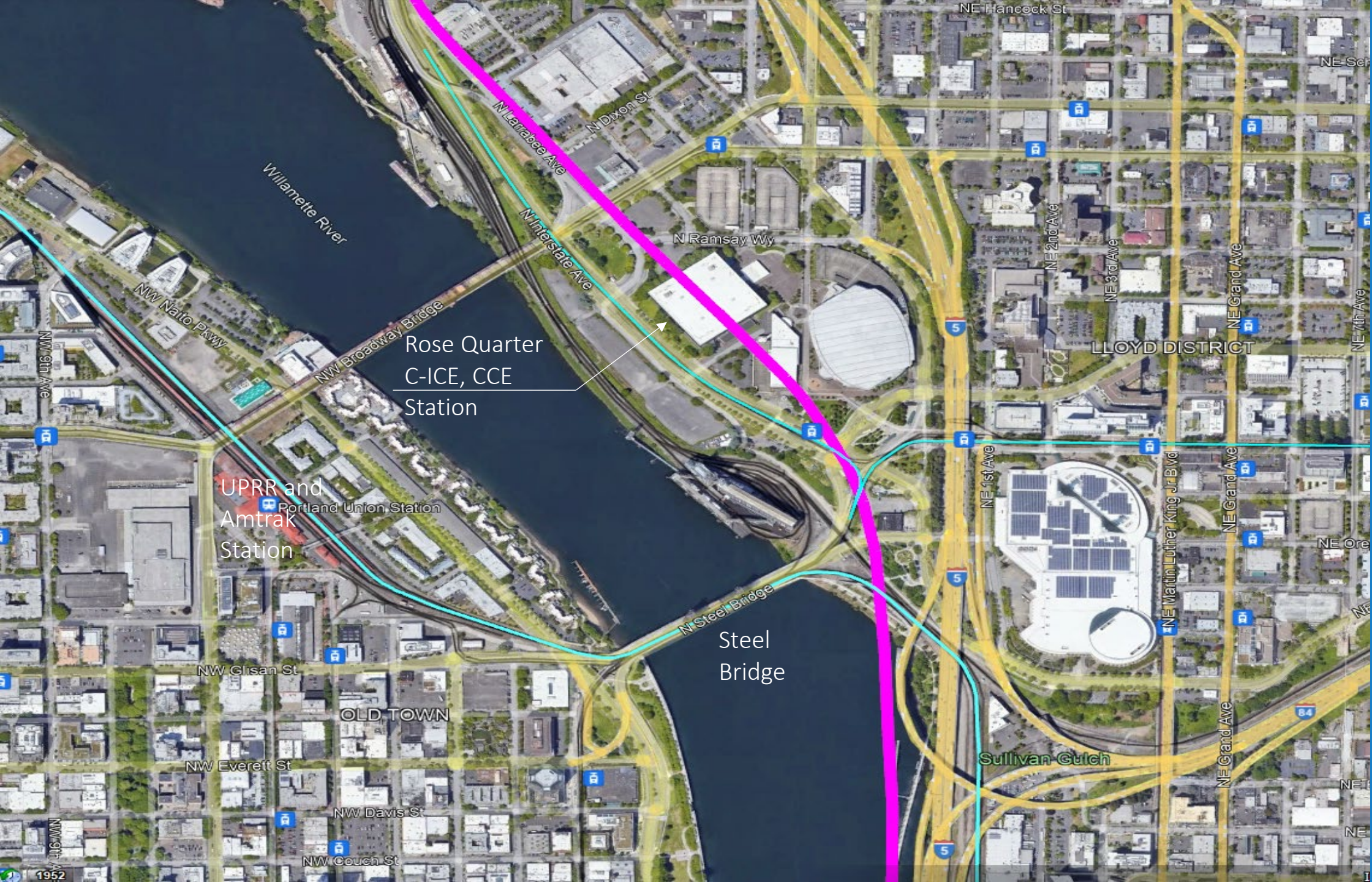
CHSR Corridor and the New I-5 Corridor between Willamette River's North Bank and SW Wilsonville Rd

This is the area for the narrowing of the combined corridor for the multi-modal bridge river crossing.



CHSR Corridor between Tualatin and the Portland Rose Quarter Transportation Hub





CHSR Corridor  
at the Portland  
Rose Quarter  
Transportation  
Hub

Rose Quarter  
C-ICE, CCE  
Station

UPRR and  
Amtrak  
Station

Steel  
Bridge

Sullivan Gulch

LLOYD DISTRICT

OLD TOWN



## Rose Quarter Transportation Hub with CHSR Station

The CHSR Station has five rail tracks for Cascadia Inter-City Express (C-ICE) trains and Cascadia Commuter Express (CCE) trains.

The station platform is 1300 feet long and 146 feet wide.

Here is an interchange with track # 2. Here, we can trans-load express freight between tracks # 1 and # 2. Number 1 will go to PDX and Troutdale

PROPOSED BUILD OUT AND ROSE QUARTER TRANSPORTATION HUB BY CHSR



**City Water Bureau and PPS**

Total Area: 33.5 acres

**Cascadia HSR**

Memorial Coliseum  
Proposed CHSR  
Station

Moda Center

**Kalberer Co.**

Total Area: 1 acre

**Aegean Corp/Paul Allen**

Total Area: 7 acres

**Dreyfus Commodities Co.**

Total Area: 5 acres

Oregon  
Convention Ctr.

City owned: 33.5 acres  
Privately owned: 13 acres

The Rose Quarter Transportation Hub

The proposed phased development is to coincide with CHSR Station and mixed-use opportunities

# Eugene CHSR Station to Portland CHSR Station Mileage and Times

Number one = Priority, number two = Secondary Stops

Station to Station	CHSR Milage	Estimated Travel Times
Eugene-Albany # 1	41.32 miles	19 minutes
Albany-Salem # 1	21.19 miles	11 minutes
Salem-Keizer # 1	3.99 miles	4 minutes
Keizer-Woodburn # 2	13.94 miles	9 minutes
Woodburn-Wilsonville # 2	10.06 miles	7 minutes
Wilsonville-Bridgeport # 2	8.35 miles	6 minutes
Bridgeport-PCC Sylvania # 2	3.08 miles	4 minutes
PCC Sylvania-Barbur # 2	1.33 miles	3 minutes
Barbur-OMSI # 1	4.92 miles	5 minutes
OMSI-Portland Rose Quarter # 1	1.73 miles	3 minutes
109.91 miles	Eugene, Albany, Salem, Portland	45 minutes (3 stops)

Transportation Mode Comparison	Stop to Stop	Estimated Travel Times
112.20 miles (Bus, Autos)	Eugene-Portland	2 hours and 45 minutes
123 miles (Amtrak)	Eugene-Portland	3 hours and 20 minutes
110 miles (CHSR)	Eugene-Portland	35 minutes (direct)

## CHSR Miles between Eugene, OR, and Portland

On Ground	Cut/Fill	Flyover or Bridges	Tunnels or Underpass
2.84 Mi Eu_014 I-5	0.19 Mi Eu_015 I-5	0.58 Mi Eu_009 new	5.39 Mi Eu_028 new
2.75 Mi Eu_018 I-5	0.54 Mi Eu_017 I-5	1.39 Mi Eu_013 new *	0.81 Mi Eu_058 new
0.80 Mi Eu_019 I-5	1.14 Mi Eu_026 I-5	0.91 Mi Eu_016 I-5	1.33 Mi Eu_059 new
30.7 Mi Eu_021 I-5	0.56 Mi Eu_027 I-5	3.00 Mi Eu_021 I-5	2.51 Mi Eu_060 I-5 *
0.93 Mi Eu_023 I-5	0.24 Mi Eu_031e I-5	3.98 Mi Eu_022 I-5	
2.76 Mi Eu_025 I-5	0.86 Mi Eu_038e I-5	0.17 Mi Eu_024 I-5	
0.23 Mi Eu_040e I-5	0.25 Mi Eu_052 I-5	2.91 Mi Eu_029 new	
6.67 Mi Eu_043 I-5	0.28 Mi Eu_053 I-5	0.81 Mi Eu_030e I-5	
4.00 Mi Eu_045 I-5	0.27 Mi Eu_057 new	0.74 Mi Eu_034e I-5	
1.47 Mi Eu_047 I-5		0.31 Mi Eu_035e I-5	
3.58 Mi Eu_048 I-5		0.35 Mi Eu_036e I-5	
		0.18 Mi Eu_037e I-5	
		0.10 Mi Eu_039e I-5	
		0.60 Mi Eu_041e I-5	
		5.72 Mi Eu_042 I-5 *	
		3.13 Mi Eu_044 I-5	
		1.10 Mi Eu_046 I-5	
		3.17 Mi Eu_048 new	
		0.99 Mi Eu_049 I-5	
		0.10 Mi Eu_051 I-5	
		1.45 Mi Eu_055 I-5	
		2.00 Mi Eu_056 I-5	
		4.13 Mi Eu_061 new	
<b>56.73 Miles 52.09 %</b>	<b>4.33 Miles 3.97 %</b>	<b>37.82 Miles 34.72 %</b>	<b>10.04 Miles 9.21 %</b>
			<b>108.92 Total Miles CHSR</b>
			<b>123 Miles Total Amtrak</b>

New and existing Right of Way (RoW) declaration.

18.65 miles in a new corridor	90.27 miles in an existing right of way, UPRR, or Hwy
17.12 % of this CHSR RoW must be acquired	82.89 % may be shared
Tunnel miles may be excluded from RoW purchase.	

\* = Some deviations, as some miles are aside from the named corridor segment.